

Spostare lo sportellino all'interno dello strumento

Slide the cover inside the meter

Estrarre il frontale

Remove front panel



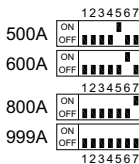
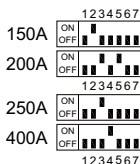
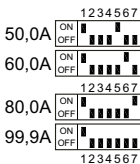
Impostare fondo scala

Set the full scale



Normalmente preimpostato per fondo scala 999 A - Factory full scale preset at 999 A

IMPOSTAZIONE FONDO SCALA AMPERE-AMPERE FULL SCALE SETTING



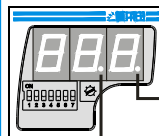
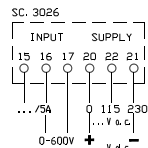
Misura 600V c.a. - 600V AC measurement



Impostazione dip-switch frontali per visualizzazione 600V c.a.
600V AC full scale frontal dip-switch setting.

Per visualizzare l' 'unita' di misura Volt e' necessario ruotare il pannello frontale.
Remove and rotate front panel to change the engineering unit from A to V

Schema inserzione Wiring diagram

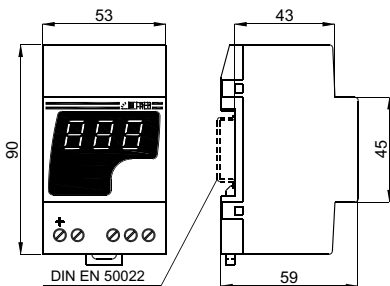


Fuori scala Overrange



Punto decimale Decimal point

Dimensioni ingombro - Overall dimensions



Istruzioni di fissaggio - Fixing instructions

